

2025 Zhik WA Youth Championships

1 to 2 October 2025

Nedlands Yacht Club, The Esplanade, Nedlands WA



Sailing Instructions (SIs)



Version 1.1 – Updated 30/9/2025, Posted 17:00

The Organising Authority (OA) is Nedlands Yacht Club (NYC), in conjunction with Australian Sailing.

‘[NP]’ in a rule denotes that a boat may not protest another boat for breaking that rule. This changes RRS 60.1

‘[SP]’ in a rule denotes that the standard penalty for a breach of the rule may be applied by the race committee or technical committee without a hearing. This changes RRS A5

1. RULES

- 1.1. The event is governed by the rules as defined in The Racing Rules of Sailing (RRS) and Australian Sailing Prescriptions.

2. CHANGES TO SAILING INSTRUCTIONS

- 2.1. Any change to the sailing instructions will be posted at least 90 minutes prior to the first warning signal on the day it will take effect.
- 2.2. Any change to the format or schedule of races will be posted on the Official Notice Board (ONB) by 17:30 on the day before it will take effect.

3. COMMUNICATION WITH COMPETITORS

- 3.1. The Official Notice Board (ONB) will be in the Race Office.
- 3.2. Duplicate notifications will be posted online at sailingyouth.org.au/youth-sail-wa. Failure to post notices online will not be grounds for redress. This changes RRS 61
- 3.3. The Race Office is located in the Sail Training Centre
- 3.4. The Race Committee will operate on VHF Ch 71 – Course Alpha, Ch 72 – Course Bravo, Ch 74 – Course Charlie, Ch 77 – Shore Control.

4. CODE OF CONDUCT

- 4.1. [DP] Competitors and support persons shall comply with reasonable requests from race officials, Australian Sailing staff and NYC staff.
- 4.2. [DP] Competitors and Support Persons shall comply with the [Australian Sailing Integrity Policies](#).
- 4.3. [DP] Boats shall not sail into other course areas whilst the other course areas are racing. Boats not racing shall remain clear of boats that are racing and official boats.

5. SIGNALS MADE ASHORE

- 5.1. Signals made ashore will be displayed on the yardarm located adjacent the control tower.
- 5.2. Signals pertaining specifically to the ALPHA Racing Area will be displayed under Naval Numeral 3.
- 5.3. Signals pertaining specifically to the BRAVO Racing Area will be displayed under Naval Numeral 4
- 5.4. Signals pertaining specifically to the CHARLIE Racing Area will be displayed under Naval Numeral 5
- 5.5. Where no Racing Area pennant is displayed, the signal applies to ALL race areas

ALPHA



BRAVO



CHARLIE



- 5.6. When flag ‘AP’ is displayed ashore, ‘1 minute’ is replaced with ‘not less than 30 minutes’ in Race Signals AP.
- 5.7. [SP] [NP] Flag D with one sound means ‘Boats shall not leave the shore until this signal is made’. The warning signal will not be made before the scheduled time or no earlier than 30 minutes after flag D is displayed.’

6. SCHEDULE OF RACES

6.1.

Date	Time	Event
Wed 1 Oct	0730 to 1700 hrs 0730 to 0830 hrs 0830 to 0850 hrs 0850 to 0905 hrs 1000 hrs - (30 mins after AP removed)	Regatta Office open Registration Volunteer, Coach and Support Boat Briefing Competitor Briefing First Warning Signal – Session 1 Lunch First Warning Signal - Session 2
Thur 2 Oct	0800 to 1700 hrs 0830 to 0850 hrs 0850 to 0905 hrs 1000 hrs - (30 mins after AP removed) ASAP after racing 1800 hrs	Regatta Office open Volunteer, Coach and Support Boat Briefing Competitor Briefing First Warning Signal – Session 3 Lunch First Warning Signal - Session 4 Presentation of prizes Western Australia Sailing Awards

- 6.2. Racing will be postponed to allow competitors to return to shore for lunch (signalled via AP ashore). The first Warning signal of the afternoon session will be no earlier than 30 minutes after AP is removed.
- 6.3. The warning signal for each succeeding race in a session will be made as soon as practicable after the completion of the previous race.
- 6.4. To alert boats that a race or sequence of races will begin soon, the orange starting line flag will be displayed with one sound at least five minutes before a warning signal is made.
- 6.5. On the last scheduled day of racing no warning signal will be made after 1530 hrs.

7. CLASS FLAGS

- 7.1. See SI Addendum B.

8. RACING AREA

- 8.1. SI Addendum A shows the approximate location of the racing area.

9. COURSES

- 9.1. The diagrams in Addendum B show the courses, including the approximate angles between legs, the order in which marks are to be passed, and the side on which each mark is to be left.
- 9.2. No later than the warning signal, the Race Committee vessel will display the course to be sailed.
- 9.3. Alpha and Charlie Committee vessels will display a numeral pennant on the yard arm to indicate the course to be sailed. Bravo Committee vessel will use a course board to indicate the course to be sailed.
- 9.4. No later than the warning signal, the Race Committee vessel may display the approximate compass bearing of the first leg.
- 9.5. If one of the gates marks is not laid, then the laid mark shall be left to port.

10. MARKS

- 10.1. See SI Addendum B.

11. THE START

- 11.1. The starting line is between a staff displaying an orange flag on the signal vessel at the starboard end and the course side of the port-end starting mark.
- 11.2. A barging buoy may be attached to the Race Committee vessel. Boats shall not pass between this buoy and the Race Committee vessel at any time.
- 11.3. [DP] Boats whose warning signal has not been made shall avoid the starting area during the starting sequence for other classes. The starting area is defined as a rectangle 50 metres from the starting line and marks in all directions.

- 11.4. All fleets will be started as per RRS Rule 26 modified for a 3 minute sequence as described below. Times shall be taken from the visual signals - the absence of a sound signal shall be disregarded. This clarifies RRS Rule 26

Minutes before starting signal	Visual signal	Sound signal	Means
3	<i>Class flag</i>	<i>One</i>	<i>Warning signal</i>
2	<i>Preparatory flag raised (P,I,U,Black)</i>	<i>One</i>	<i>Preparatory signal</i>
1	<i>Preparatory flag removed</i>	<i>One long</i>	<i>One minute</i>
0	<i>Class flag removed</i>	<i>One</i>	<i>Starting signal</i>

- 11.5. [SP] A boat that does not start within 3 minutes after her starting signal will be scored Did Not Start without a hearing. This changes RRS 35, Appendix A5.1 and Appendix A5.2.
- 11.6. [DP] iQFOiL Course Racing Only. The race committee may signal that boards shall sail on a specific tack during the 10 seconds before and 10 seconds after the starting signal is made, by displaying a green flag for starboard tack or a red flag for port tack, before or with the warning signal.

12. CHANGE TO THE NEXT LEG OF THE COURSE

- 12.1. Legs of the course will not be changed after the preparatory signal. This changes RRS 33.

13. THE FINISH

- 13.1. The finishing line is between a staff displaying a blue flag on the finishing boat at the starboard end and the course side of the port-end finishing mark.
- 13.2. For Intermediate Optimist, Open Skiff Silver and iQFOiL only, boats which are still deemed to be racing by the race committee but are outside the Finish Window may be scored an allocated place based on their position when the Time Limit expires. Such boats may be directed to return to the start area or other location without crossing the finish line. Neither the allocation of a finish place nor the failure to allocate a finish place will be grounds for redress. This changes RRS 35, RRS 62.1, RRS Appendix A5.1, A5.2 and A10.

14. TIME LIMITS AND TARGET TIMES

14.1.

Class	Time Limit	Finish Window	Target Time
ILCA 4, 6 & 7	60	15	40
29er	45	15	30
Foiling Classes	25	10	15
All other classes	60	15	35

- 14.2. Boats failing to finish within the time stated in the Finish Window after the first boat starts, sails the course and finishes will be scored Did Not Finish, except as provided for in SI 13.2. This changes RRS 35, RRS Appendix A5.1 and A5.2.
- 14.3. Failure to meet the Target Time will not be grounds for redress. This changes RRS 61.

15. HEARING REQUESTS

- 15.1. The Organising Authority has appointed a Non-Appealable Protest Committee for this event in accordance with RRS 91. Australian Sailing's approval of this appointment is posted on the On-Line Board. The right of appeal from a protest committee hearing is denied as provided in RRS 70.3.
- 15.2. Protests shall be submitted on a protest form directly to the Race Office.
- 15.3. For each class, the protest time limit is 60 minutes after the last boat has finished the last race of the day or the race committee signals no more racing today, whichever is the later.
- 15.4. Notices will be posted no later than 30 minutes after the protest time limit to inform competitors of hearings in which they are parties. Hearings will be held in the Jury room behind the Race office beginning at the time posted.
- 15.5. A list of boats that have been penalized under Appendix P for breaking RRS 42 will be posted on the Official Notice Board.

16. **SCORING**

- 16.1. The Low Point System of RRS Appendix A will apply. For the iQFOiL Class RRS B8 is deleted.
- 16.2. One race is required to be completed to constitute a series.
- 16.3. To request correction of an alleged scoring error in posted race or series results, a boat shall complete a scoring enquiry within 30 minutes of the score being published.
- 16.4. When fewer than four races have been completed, a boat's series score will be the total of her race scores.
- 16.5. When four or more races have been completed, a boat's series score will be the total of her race scores, excluding her worst score.

17. **SAFETY REGULATIONS**

- 17.1. [SP] Competitors shall wear Personal Floatation Devices at all times while afloat, except briefly while changing or adjusting clothing or personal equipment.
- 17.2. Boats not leaving the beach for a scheduled race shall promptly notify the Race Office.
- 17.3. Sign On and Off sheets will be made available in front of the Race Office no later than 1 hour before the first race of each session.
- 17.4. Before leaving to race on each scheduled race session, the skipper shall sign on.
- 17.5. [SP] Failure to sign on will result in that boat receiving a scoring penalty for the first race in the session. This changes RRS 63.1 and A5.
- 17.6. After each scheduled race session, the skipper shall sign off.
- 17.7. [SP] Failure to sign off within the protest time limit will result in that boat receiving a scoring penalty for the last race in the session. This changes RRS 63.1 and A5.
- 17.8. [DP] A boat that retires from racing shall notify the Race Committee before leaving the racing area, or, if that is not possible, shall notify the Race Office as soon as possible after returning ashore and shall complete a retirement declaration form at the Race Office before the expiry of the protest time limit.
- 17.9. [DP] Race officials and race committee vessels may retrieve boat crews and return them to their boats for safety reasons. The sail number of a boat which receives outside help will be notified to the Race Committee with details of the incident and a hearing may be held (if required) to determine any penalty. This changes RRS 41.

18. **[DP] EQUIPMENT AND MEASUREMENT CHECKS**

- 18.1. Equipment may be inspected at any time for compliance with the Class Rules and Sailing Instructions. When instructed by a member of the Technical Committee, a boat shall proceed immediately to a designated area for inspection.
- 18.2. Penalties for a breach of Class Rules are at the discretion of the jury and may be less than disqualification.

19. **OFFICIAL VESSELS**

- 19.1. Official vessels may carry the NYC burgee, Jury vessels will carry a white flag with a black 'JURY', Media vessels will carry a white flag with a black 'M'.

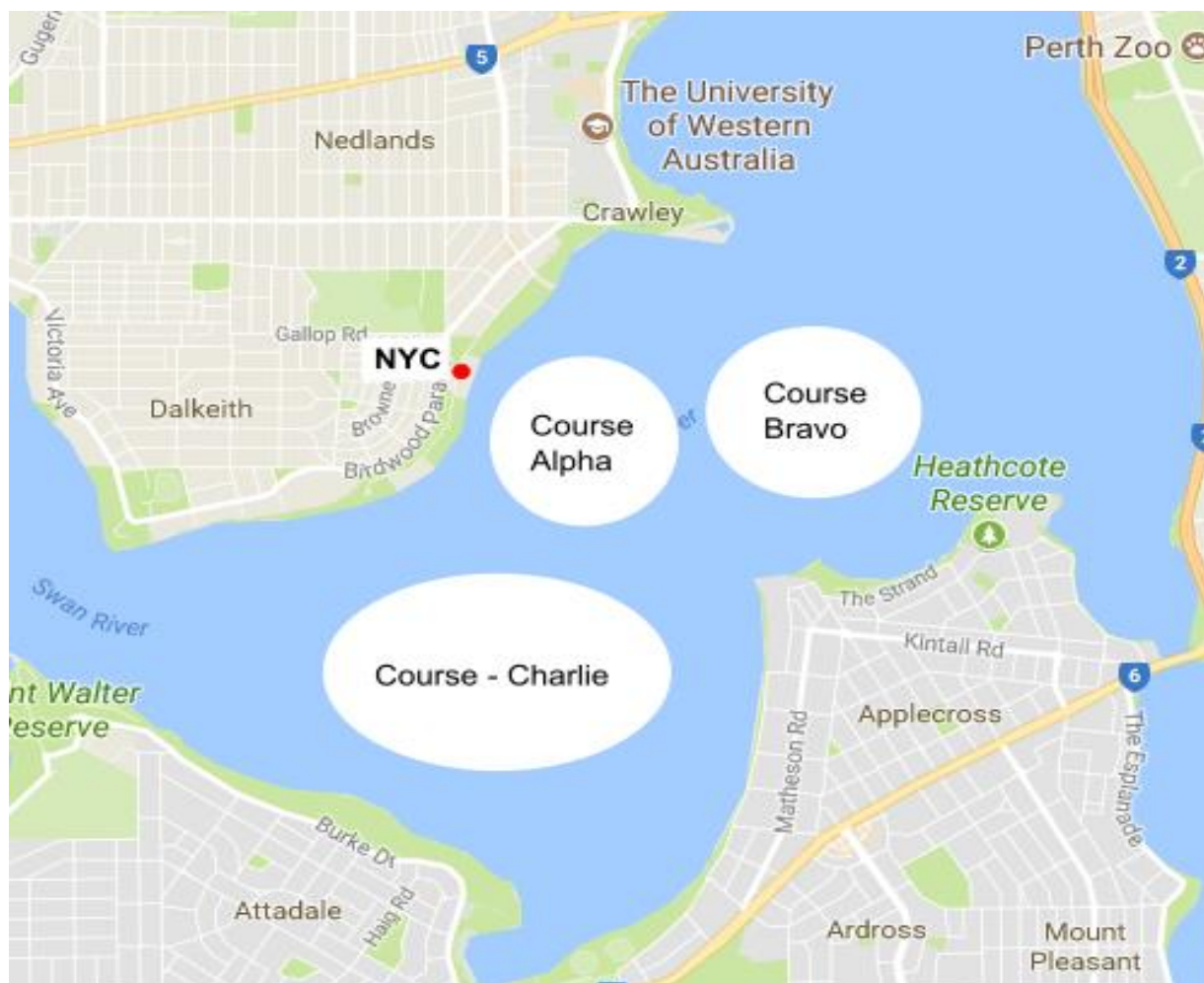
20. **SUPPORT TEAMS**

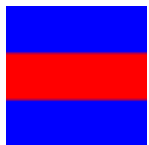
- 20.1. All support person vessels shall be registered for the event via the [official website](#). The organising authority may refuse registrations and accept late registrations at their discretion.
- 20.2. Support teams, including all support persons and support person vessels, shall comply with the support team regulations listed in Addendum C – Support Person Vessel Regulations
- 20.3. For the purposes of these regulations, a support boat includes any boat that is under the control or direction of a person who is or may provide physical or advisory support to an athlete, including the gathering of data that may be used at a later time.
- 20.4. The Organising Authority may inspect boats at any time to ensure that they comply with these regulations, and the person responsible for the boat shall facilitate such inspection.
- 20.5. Only registered support boats will be allowed into the sailing venue. (Allocated berths or area will be provided at registration)
- 20.6. When not in use, support boats shall be appropriately berthed as directed by the Organising Authority in the allocated areas for support boats.

21. **[DP][NP] EVENT ADVERTISING**

- 21.1. Boats shall display advertising for event sponsors in accordance with the [World Sailing Advertising Code](#), supplied by the Organising Authority as follows: All entrants ~~will~~ **may** be supplied with ~~two~~ Zhik stickers **as available**.
- 21.2. For all dinghy and catamaran classes, a Zhik sticker ~~is to~~ **should** be applied to the hull of each boat on **either one or both** side of the bow.
- 21.3. For iQFOiL, On the sail a Zhik sticker ~~shall~~ **should** be placed immediately below batten #4 on the 8.0, 7.3 or 7.0 sails and below batten #3 on the 6.0 or 5.0 sails, as close to the leech as possible but without overlapping the sail corner reinforcement. Competitors shall not cut or adapt the stickers in any way.

SI ADDENDUM A – RACING AREAS





ALPHA Course

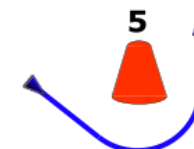
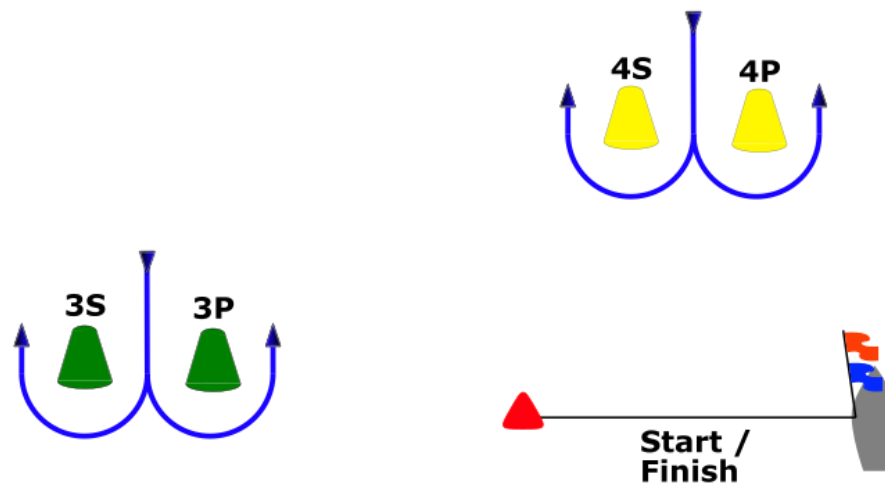
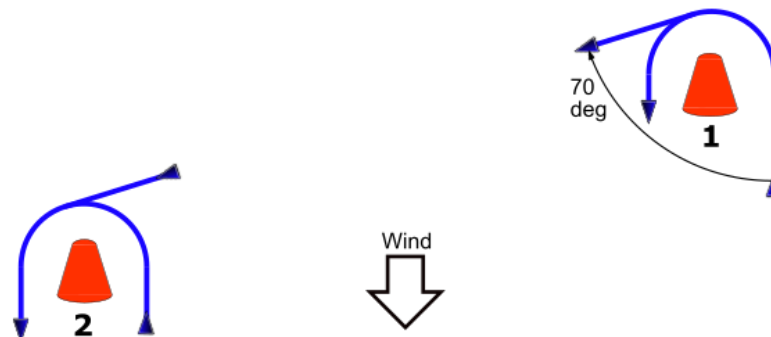
Class	Class Flag	
Optimist Open	Optimist Insignia on White	
Open Skiff Gold	Open Skiff Insignia on White	
Course Signal	Rounding Mark Order	
1 -		Start-1-2-3SP-2-3P-5-Finish
2 -		Start-1-2-3SP-2-3SP-2-3P-5-Finish

Class	Class Flag	
Optimist Intermediate	Optimist Insignia on Pink	
Open Skiff Silver	Open Skiff Insignia on Pink	
Course Signal	Rounding Mark Order	
1 -		Start-1-4SP-1-2-3P-5-Finish
2 -		Start-1-4SP-1-4SP-1-2-3P-5-Finish

Mark	Description
Pin End Start Finish	Red Pyramid inflatable buoy
1, 2 and 5	Red inflatable buoy
3SP	Green inflatable buoy
4SP	Yellow inflatable buoy

Note:

1. Marks 1, 2 and 5 will be left to port.
2. Marks 3SP, 4SP are gates.
3. When sailing from Mark 3 to Mark 5 boats shall pass between 3SP.
4. Diagram not to scale, angles approximate.





BRAVO Course

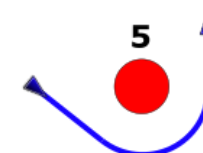
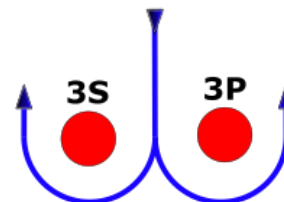
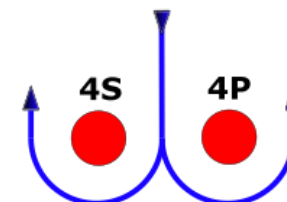
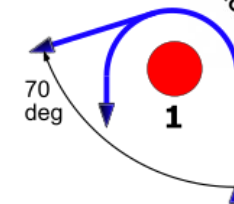
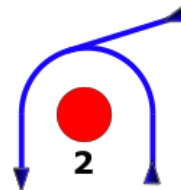
Class	Class Flag
ICLA 4	ILCA Insignia (Red) on Yellow
ILCA 6	ILCA Insignia (Red) on Green
RS Aero	RS Aero 7 Insignia on Yellow

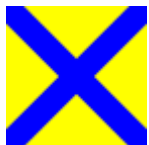
Signal	Mark Rounding Order
IO	Start-1-2-3P-5-finish
I1	Start-1-4SP-1-2-3P-5-finish
I2	Start-1-4SP-1-4SP-1-2-3P-5-finish
I3	Start-1-4SP-1-4SP-1-4SP-1-2-3P-5-finish
01	Start-1-2-3SP-2-3P-5-finish
02	Start-1-2-3SP-2-3SP-2-3P-5-finish
03	Start-1-2-3SP-2-3SP-2-3SP-2-3P-5-finish

Mark	Description
Pin End Start Finish	Chequer Pencil buoy
1, 2 and 5	Red inflatable buoy
Marks 3SP and 4SP	Red inflatable buoy

Note:

1. Marks 1, 2 and 5 will be left to port.
2. Marks 3SP, 4SP are gates.
3. When sailing from Mark 3 to Mark 5 boats shall pass between 3SP.
4. Diagram not to scale, angles approximate.





CHARLIE Course

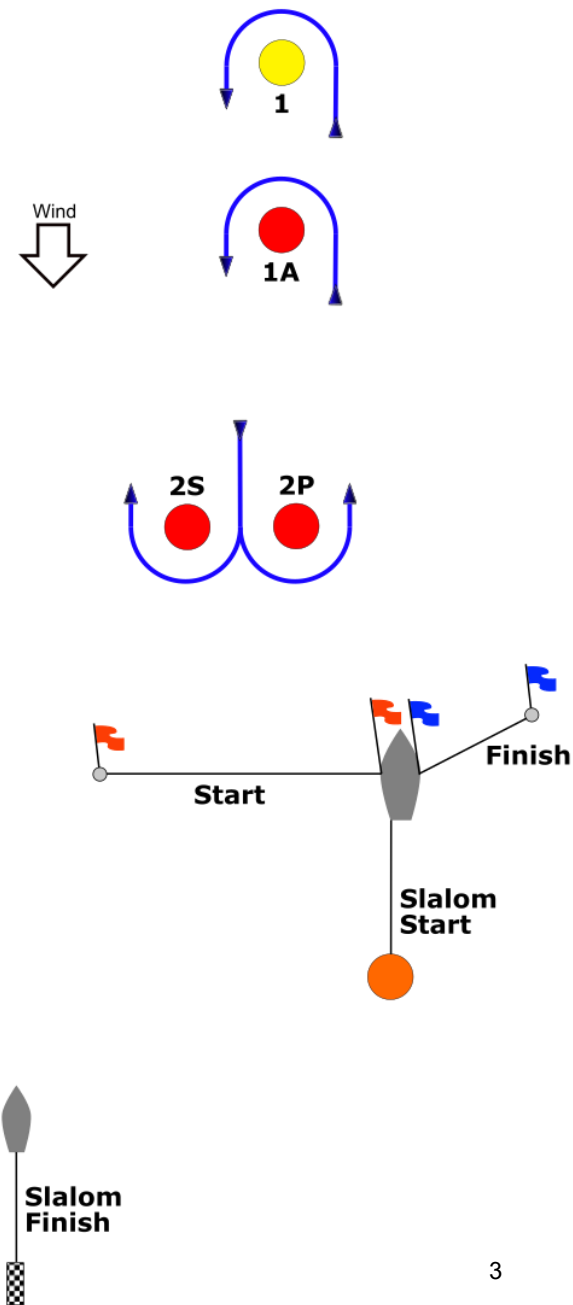
Class	Class Flag
iQFoil Open	Black WF on Green
Course Signal	Mark Rounding Order
1	Start-1-2SP-1-2SP-1-2SP-1-Finish
2	Start-1-2SP-1-2SP-1-2SP-1-2SP-1-Finish
3 (Slalom)	Start-3-4-3-4-3-Finish

Class	Class Flag
iQFoil Junior	Black WF on Green
Course Signal	Mark Rounding Order
1	Start-1-2SP-1-2SP-1-Finish
2	Start-1-2SP-1-2SP-1-2SP-1-Finish
3 (Slalom)	Start-3-4-3-Finish

Class	Class Flag
29er	29er Insignia on Red
420 / Junior Dinghy	420 Emblem on Red / Blue
Course Signal	Mark Rounding Order
1	Start-1A-2SP-1A-2SP-1A-Finish
2	Start-1A-2SP-1A-2SP-1A-2SP-1A-Finish

Mark	Description
Pin End Start	Orange flag on stick buoy
Pin End Finish	Blue flag on stick buoy
Mark 1	Yellow inflatable buoy
Mark 1A	Red inflatable buoy
Marks 2SP	Red pimple buoys
Pin End Start (Slalom)	Orange pimple buoy
Pin End Finish (Slalom)	Chequer inflatable buoy
3 and 4 (Slalom)	Orange pimple buoys

Diagram not to scale, angles approximate.



SI ADDENDUM C – SUPPORT PERSON VESSEL REGULATIONS (WA)

These Support Vessel Regulations shall apply at all times while the boat is at the venue.

1. GENERAL

- 1.1. Support person vessels shall comply with local legislation, including the safety equipment to be carried. A copy of the regulations are available at [safety-equipment-for-powered-vessels](#).
- 1.2. Life jackets (minimum Level 50) must be worn by all persons onboard and Kill cords must be used by the driver when motor is operating.
- 1.3. Support person vessel drivers must hold a Power Boat Licence.
- 1.4. All support person vessels are required to carry a working VHF radio to monitor the advised frequency.
- 1.5. Support vessels must have a current insurance policy with a minimum value of \$5,000,000 for public liability insurance.
- 1.6. At all times, the registered driver(s) of a support vessel shall comply with directions given by a Race Official. This includes assisting in rescue operations when instructed to do so. RRS 37 - When a race committee displays code flag "V" with one sound, all boats and official and support vessels shall monitor the race committee communication channel for search and rescue instructions.
- 1.7. All support person vessels shall keep to leeward of the start line and its extensions between the preparatory signal and the start signal and more than 50 metres clear of any competing boat or mark of the course, between the start signal and the finish of the last boat, except when asked by the race committee to enter the course area or assist competitors.
- 1.8. Support boats shall not leave any device, piece of equipment, buoy, marker or similar item permanently in the water. Temporary use of floating objects is allowed for current measurement. These objects shall be removed as soon as the measurement has been taken.
- 1.9. Support boats shall take particular care to minimise their wash when transiting the course areas. Support boats shall not interfere with boats racing or official boats or create a wake that affects boats racing.
- 1.10. If an identifying number is supplied by the Organising Authority, it shall be clearly displayed on the support vessel at all times.
- 1.11. The Organising Authority may change these regulations at any time. Any changes will be posted on the Official Notice Board.
- 1.12. Penalties may apply to competitors that are associated with a support vessel that breaches any of these conditions.

2. SAILING VENUE

- 2.1. Only registered Support Boats will be allowed into the sailing venue. (Allocated berths or area will be provided at registration).
- 2.2. Support Boats shall use the designated boat ramps/area for launching – these may be a short distance from the venue. Once launched, trailers shall be moved immediately to a designated trailer park or as otherwise directed by the Organising Authority.
- 2.3. When not in use, support boats shall be appropriately berthed as directed by the Organising Authority in the allocated areas for support boats for the entire time that these Regulations apply.
- 2.4. Support boats shall not use the designated dinghy launching area for any purpose whatsoever, including mooring, launching and retrieval, and loading and unloading of equipment.

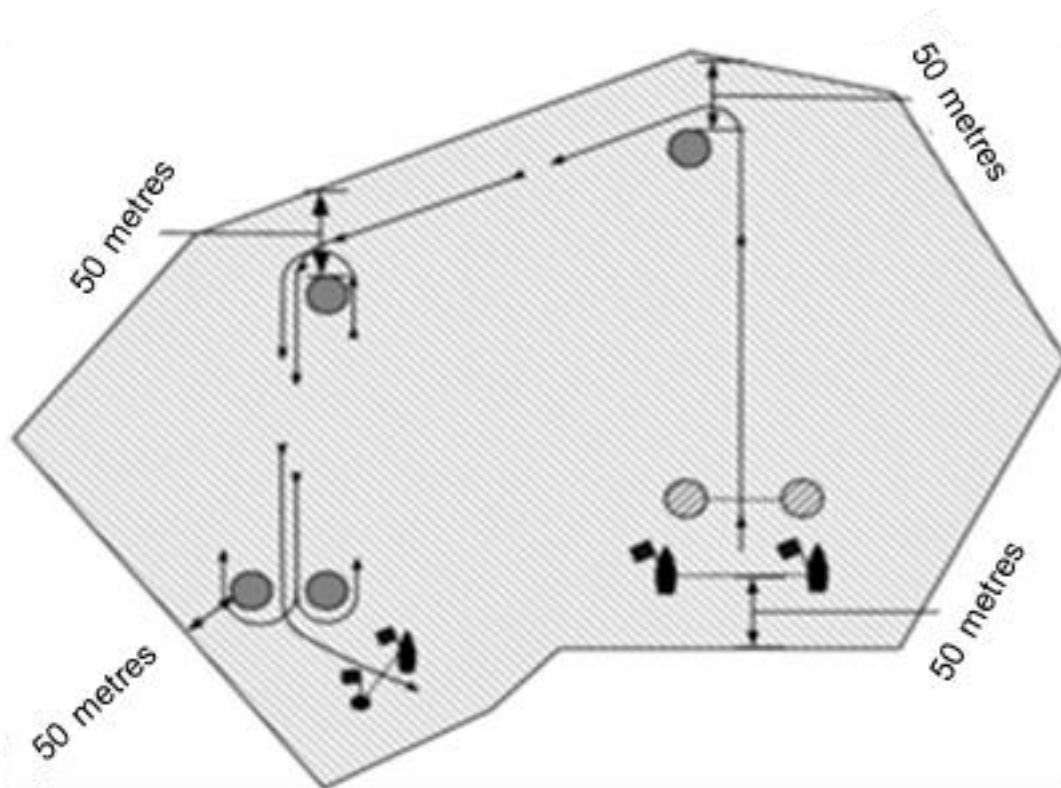
3. RACE AREA RESTRICTIONS

- 3.1. Support boats shall not be positioned on the course:
 - a) Closer than 50 metres of any boat racing
 - b) Within 50 metres of the starting line, its extensions and marks of the course from the time of the preparatory signal until all boats have left the starting area, or the Race Committee signals a postponement, general recall or abandonment.
 - c) Between any boat racing and the next mark of the course.
 - d) Between the inner and outer trapezoid courses when boats are racing on both courses.
 - e) Within 50 metres of any mark of the course while boats are in the vicinity of that mark.
 - f) Within 50 metres of the finishing line and marks while boats are finishing.
- 3.2. In addition, support boats that are motoring above 5 knots shall remain at least 150 metres from any

boat racing.

3.3. Below is a diagram of race area restrictions.

Trapezoid Course Example



2025 WA YOUTH CHAMPIONSHIPS - STANDARD PENALTIES

The Race Committee may apply the following penalties without a hearing when the following rules are broken.

The Race Committee may protest a boat if it considers a standard penalty is inappropriate.

The penalty when applied will not make a boat's score worse than DNF.

Breach	Standard Penalty	Sailing Instruction
Launching before Flag D Displayed	Five points scoring penalty on the first race of the session	5.7
Failure to wear a life jacket	Five points scoring penalty for all races sailed without a lifejacket	17.1
Not Signing On	Five points scoring penalty on the first race of the session	17.5
Not Signing Off	Five points scoring penalty on the last race of the session	17.7
A boat that does not start within 3 minutes after her starting signal	Scored DNS	11.5